

When your HTS data rolls in, how will you stay afloat?

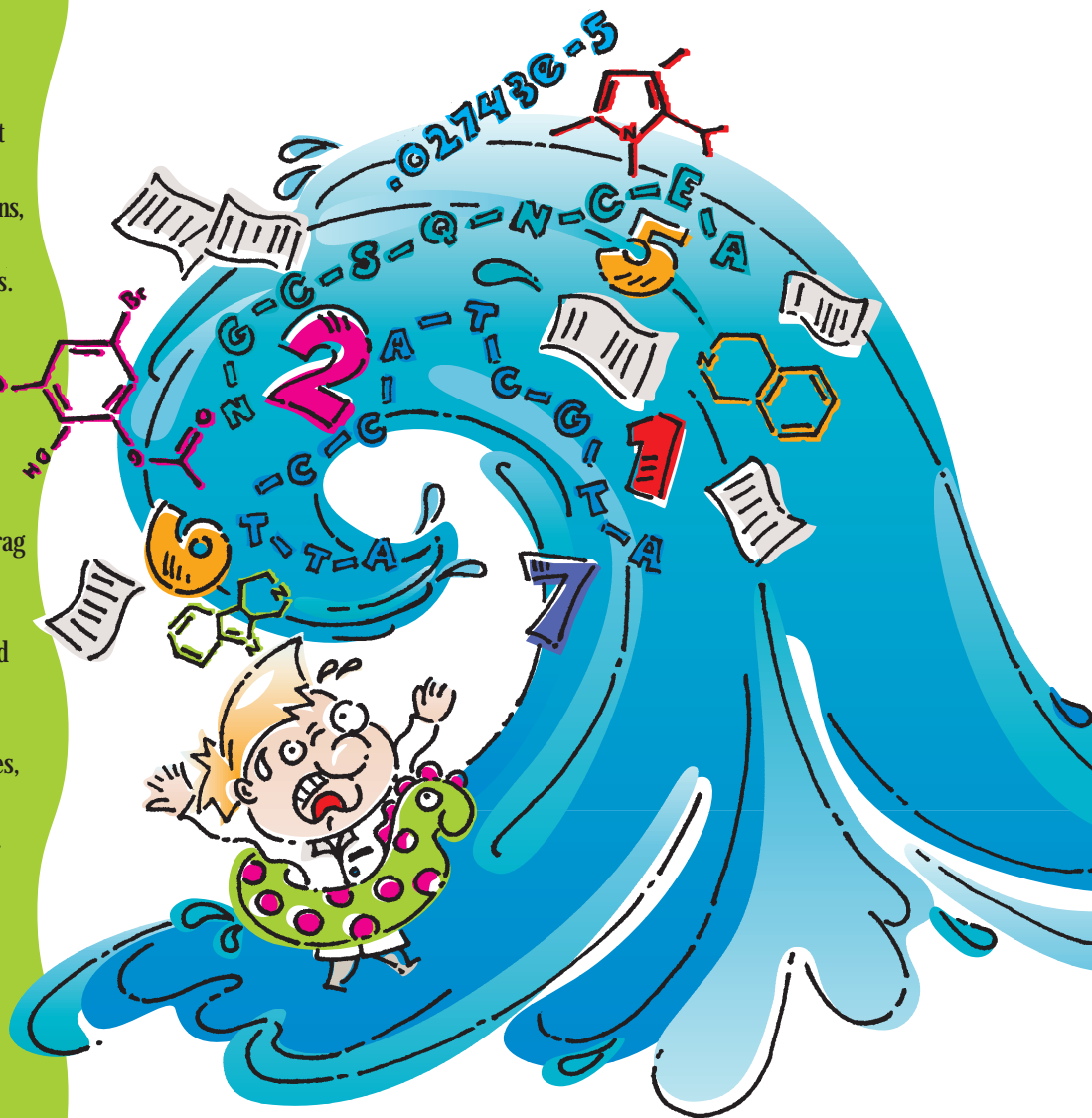
Who wouldn't want to take the plunge? The potential rewards of high throughput screening are enormous. Automated processes. The opportunity to screen millions, even billions of samples annually. More efficient and directed discovery programs.

But many laboratories fail to consider how they will manage the volumes of data generated by HTS programs. An inadequate system that fails to present all of the information generated by your lab in a format you can use can drag your HTS operation under like a riptide.

MDL SCREEN manages the data generated during every stage of the HTS process. Built on the solid foundation of ORACLE and designed in working HTS laboratories, the system can handle the variety and complexity of today's discovery research. And MDL SCREEN comes from MDL Information Systems, Inc., a company with nearly two decades of experience providing innovative solutions and services for managing discovery data.

Before you get all wet, talk to MDL about keeping your HTS program afloat with MDL SCREEN. Because in today's competitive research environment, you can't afford to go under.

MDL is a registered trademark and MDL SCREEN is a trademark of MDL Information Systems, Inc. ORACLE is a registered trademark of Oracle Corporation.



MDL
Information Systems, Inc.

14600 Catalina Street
San Leandro, CA 94577
510-895-1313
888-888-4635
Fax 510-483-4738
email: screen@mdli.com
<http://www.mdli.com>